

## SCHEDULING

Call 513.936.5299 to schedule your screening examination.

No Prescription Needed.

## PRICE OF TESTING:

CAROTID, AAA, PAD	
One screening test	\$45
Two screening tests	\$90
Three screening tests	\$100

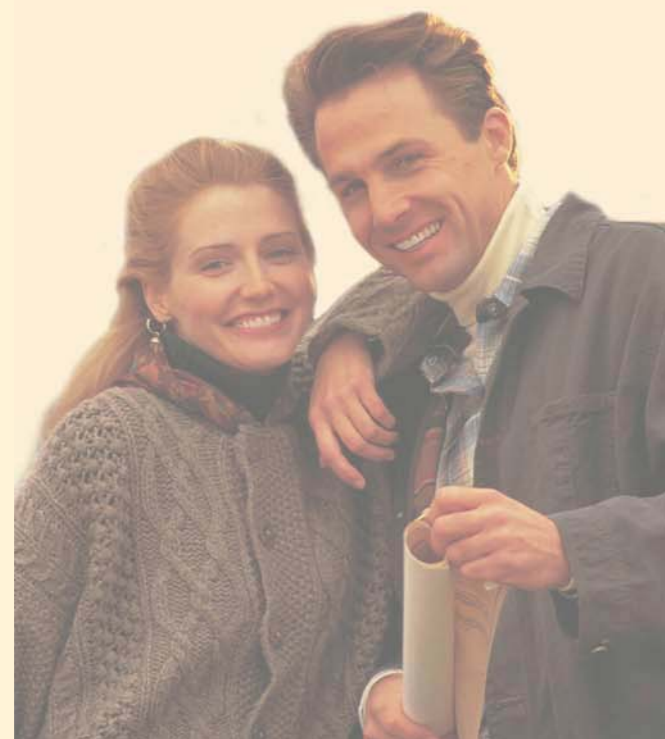
Only 15 minutes for all three exams.

## REPORTING

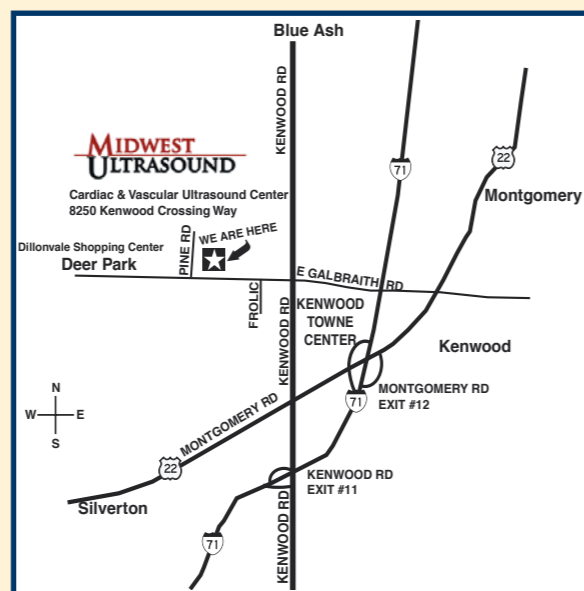
You will be given a preliminary report by the sonographer upon completion of your exam(s). The screening will then be reviewed by a board-certified vascular surgeon, and a signed final report will be mailed to you within one week. You are encouraged to share this report with your physician.

Cardiac & Vascular Ultrasound Centers, a division of Midwest Ultrasound, Inc., is accredited for diagnostic testing by the Intersocietal Commission for the Accreditation of Vascular Laboratories (ICAVL). Tests are performed by Registered Vascular Technologists (RVT).

“Thanks to my wife insisting I go in for a screening, the professionals at the Cardiac & Vascular Ultrasound Center found a blockage in my carotid artery. My physician now keeps a careful watch on this condition. I have the comfort of knowing the blockage can be monitored and taken care of before it becomes a major health issue for me.”



8250 Kenwood Crossing Way

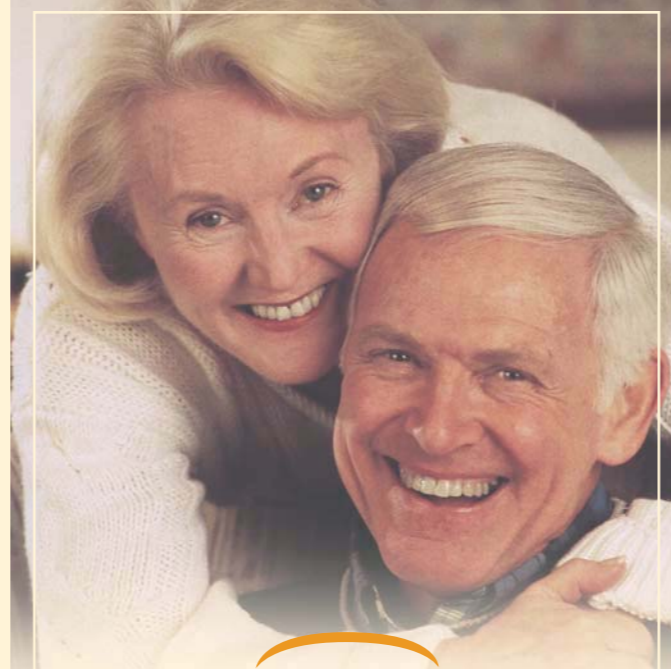


### Going North on I-71

Exit onto Kenwood Road  
Turn left on Kenwood Road  
Turn left on East Galbraith Road  
We are the third driveway on the right, 8250 Kenwood Crossing Way (Pine Road is access road)

### Going South on I-71

Exit onto Montgomery Road  
Turn right on Montgomery Road  
Turn right on Kenwood Road  
Turn left on East Galbraith Road  
We are the third driveway on the right, 8250 Kenwood Crossing Way (Pine Road is access road)  
Questions? Please call us at 513-936-5291



CARDIAC &  
VASCULAR  
ULTRASOUND  
CENTERS

Operated by

**MIDWEST  
ULTRASOUND**

15 minutes of your time  
could save your life with our  
vascular screening program

513.936.5299

SCREENING FOR LIFE

## Are you interested in your *Health?*

### WE TEST FOR:

#### Abdominal Aortic Aneurysm (AAA)

The aorta is the largest artery in the body, supplying blood to the abdomen, pelvis and legs. An abnormal enlargement caused by weakening of the arterial wall is called an aneurysm. A large aneurysm in this artery can rupture, which is often fatal.

#### Carotid Artery Stenosis (Stroke Risk)

The carotid arteries are the main blood supply-lines to the brain. Build-up of a fatty substance called “plaque” can partially or completely block these arteries. This blockage, if severe, can significantly increase the risk of stroke.

#### Peripheral Arterial Disease (PAD)

Arterial blockage from plaque can also develop in the arteries of the legs resulting in reduced blood flow. This can affect the ability to walk and, if severe enough, could result in a risk of amputation.

### HOW IT'S DONE:

#### AAA and Carotid Artery Screening

For these tests you will lie on your back on an exam table. The Vascular Sonographer will apply a small amount of clear gel to your abdomen and/or neck. An ultrasound transducer is moved painlessly over the area to acquire images and assess blood flow.

For the abdominal screening we ask that you fast for 6 hours prior to your test, and eat a light meal the night before. You may take your medications with water. For the carotid artery test there is no preparation needed, just wear a loose open-collar shirt or blouse.

#### PAD Screen

For this test you will lie on your back on an exam table. The Vascular Sonographer will use blood pressure cuffs and a special Doppler ultrasound transducer to measure the pressures in each arm, and in the arteries of both ankles. A mathematic calculation of these pressures will suggest the presence or absence of significant arterial blockage.

## SHOULD I GET CHECKED?

### Risk Factors for AAA

- Age over 60 years
- Family history of AAA
- Smoking history
- High blood pressure

### Risk Factors for a Stroke

- High blood pressure
- Diabetes
- Smoking history
- High cholesterol levels
- Family history of stroke
- Prior stroke
- Irregular heartbeats, particularly atrial fibrillation
- Severe circulatory problems in other areas
- Heart disease

### Risk Factors for PAD

- High blood pressure
  - Diabetes
  - Smoking
  - High cholesterol levels
  - Family history of PAD
  - Heart disease
- ALSO: Muscle pain in the legs when walking or exercising can be a symptom of PAD

For more information about these conditions and tests visit:

[www.midwestultrasound.com](http://www.midwestultrasound.com)

Now you can have peace of *Mind.*



“I felt perfectly healthy and yet I had a history of high blood pressure in my family. My wife Delores and I went in—it was convenient, low cost and we found out that we were fine. Glad I got it checked out. It gave me peace of mind.”